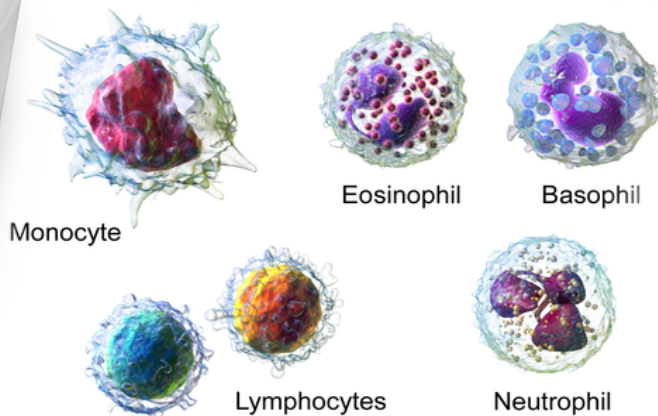


White Blood Cell Analyzer

5 DIFF Reader



ID:	No.	00009	
Items	Result	Unites	Reference
WBC	6.3	$10^9/L$	3.5 - 9.5
LYM%	29.0	%	20.0 - 50.0
MON%	5.0	%	3.0 - 10.0
NEU%	64.0	%	40.0 - 75.0
EOS%	2.0	%	0.4 - 8.0
BAS%	0.0	%	0.0 - 1.0



easy operation



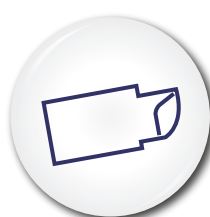
Rapid test



Accurate result



Convenient
portability



Microfluidic Chip
zero Pollution



Precise
identification

SMALL SIZE HIGH ACCURACY PROFESSIONAL DESIGN STRIVING FOR PERFECTION

white blood cell analyzer WBC series

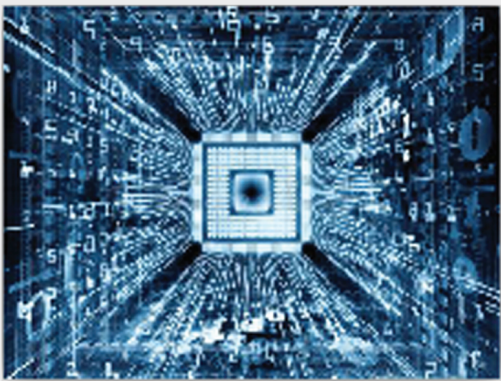


Small Size

- Portable Design
- Light Weight
- Convenient To Carry



Long Working Time
Rechargeable lithium
battery built-in available
for out-door using .



Particular Sensor And Algorithm

- Special Matrix central sensor
- particular OCSF central algorithm
- tens of thousands clinic data
- providing you an exact examining result



Portable WBC Analyzer

+ Exclusive Matrix core sensor
Unique OCSF core algorithm = Accurate Result

Unique one-time-use disposable test chip

Completely eliminate carry pollution, Low maintenance cost

Big button Permanent magnet force feedback processing unit

- Million times button testing
- sensitive as ever

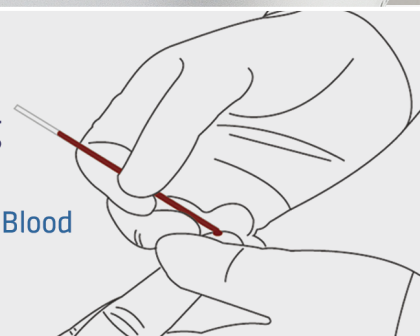


Fast testing speed

- Getting result fast in 3 mins

Less blood collection Convenient for using

- Small Size Sample
- Only Need 10 UI Fingertip Blood



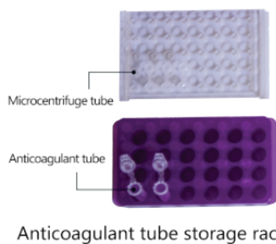
Colorful LCD

- Colorful 4.3 inch
- liquid crystal TFT display
- Succinct screen



Analyzer device

Microcentrifuge tube storage rack



Alcohol pad

Capillary tube

Rubber dropper bulb

Blood lancet

Cotton stick

Pipette

Pipette tip



Pipette tip storage box

Staining solution

Testing chip

Alcohol pad

Capillary tube

Rubber dropper bulb

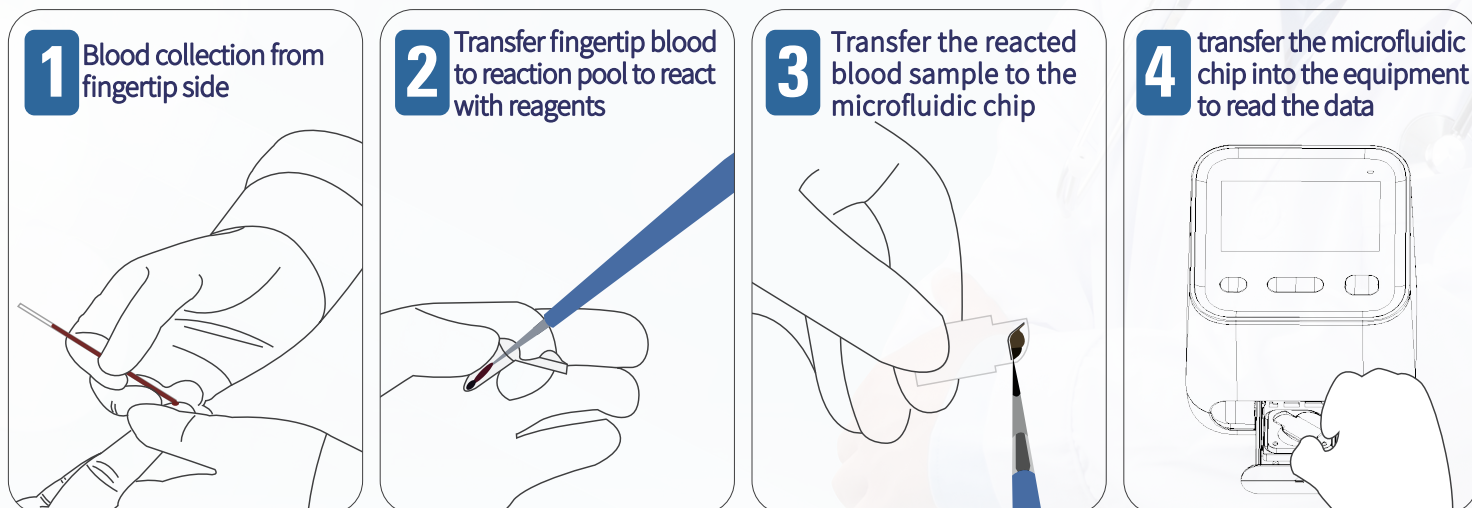
Blood lancet

Cotton stick

Pipette



Easy operation



Provide you with accurate analysis results of white blood cell anytime and anywhere

Ultra-high Portability

No matter in the emergency room or in the place without convenient traffic system, the equipment can provide high-precision test results to you at any time for the ultra-high portability (weight 750 g).

Accuracy

The equipment is configured with high-precision pattern recognition algorithm, and provides new testing and evaluating methods to diagnose, monitor and treat the diseases.

Easy Operation

No reagent solution collocating, even non-professionals can test the quantity of white cell easily.

Technical index

test method	optical test method
test range	$(0.3-30.0) \times 10^9/L$
sample type	blood from capillaries or veins
sample volume	10 μ L
repetitiveness	the precision of this WBC $\leq 6.0\%$ in the range $4.0 \times 10^9/L - 10.0 \times 10^9/L$
data storage	30000 sample results
speed	normal mode: ≤ 3 minutes/time Fast mode: < 30 seconds/time
data transportation	USB、blue teeth

Physical specifications

dimension	138mm \times 140mm \times 116mm
weight	approx 750 g

Environmental standards

running environment	temperature: 15 $^{\circ}$ C -35 $^{\circ}$ C relative humidity: $\leq 85\%$
running air pressure	70kPa~110kPa
storage environment	temperature:-20 $^{\circ}$ C- 60 $^{\circ}$ C relative humidity: $\leq 85\%$
storage air pressure	70kpa-110kpa

AL-MUBDAA SCIENTIFIC BUREAU - مكتب المبدع العلمي

www.almubdaa.com info@almubdaa.com

[almubdaa.company](https://www.facebook.com/almubdaa.company) 0 7 7 1 7 4 2 2 3 1 8

Iraq , Baghdad , Alsaadoon St. Naser square

